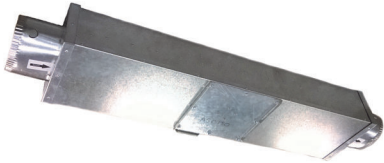


ASC150 - low profile, low sound centrifugal



ASC150

The ASC150 has been specially designed for use in residential apartment ventilation where very low head clearance and low sound characteristics are demanded. The fans are available in either EC or AC motor configuration. Duct connection flanges are 150mm ovoid. Patented grid design inlet mouldings minimise noise and improve airflow performance.

Construction

The fans are fitted with backward curved centrifugal impellers driven by external rotor motors with sealed for life bearings. Cases are fabricated from galvanised steel sheet. Sound absorbing materials are chemically inert and non hygroscopic.

Features

- Low head clearance - 150mm
- Unrivalled low sound levels
- Highly energy efficient EC option
- Unique bracket design allows one person installation
- Smaller and lighter than competitor products
- 150mm ovoid duct connection spigots
- Speed controllable (EC ~ 0-10v, AC ~ VA type controller)

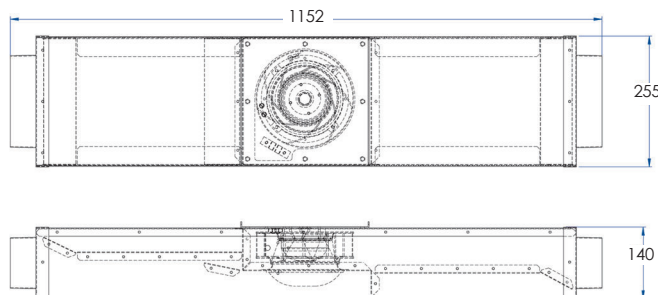
Wiring

Fans are fitted with flex leads and plugs.

Suggested Specification

Low profile centrifugal type fans shall be of the ASC150 Series manufactured by Pacific HVAC Engineering Pty Ltd.

Backward curved impellers shall be driven by external rotor motors with sealed for life bearings.



Fan Model	RPS	Voltage	Amps	kW @ 50Hz	SPL dB referred to 10 ⁻¹² W Type D: ducted inlet/outlet (LW)								
					63	125	250	500	1K	2K	4K	8K	dB(A) @ 3m
ASC150-2E	39	240	0.23	0.052	-	46	49	47	44	53	44	45	35
*ASC150-VEE @ 100%	53	240	0.75	0.083	71	64	61	64	63	63	60	50	48
*ASC150-VEE @ 75%	40	240	0.32	0.034	64	57	54	57	56	56	53	43	41
*ASC150-VEE @ 50%	27	240	0.09	0.01	54	47	44	47	46	46	43	33	32
*ASC150-VEE @ 25%	13	240	0.01	0.001	38	31	28	31	30	30	27	17	15

* EC Model

