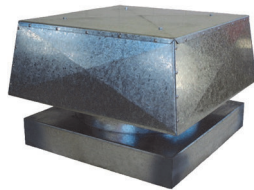
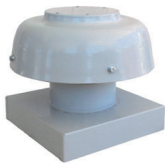


BVCQ Series Cowls Bushfire Compliant



BVCQ-1 to BVCQ-5



BVCQ-0



BVCR-150

BVCQ

Roof cowls are designed to provide a weatherproof opening in ducted systems to the outside of buildings. BVCQ models provide a range of sizes and capacities to suit almost any specification in either supply or exhaust air configuration. The cowls meet the requirements of **AS 3959-2009** up to BAL-40.

Construction

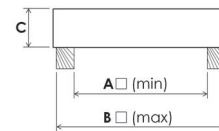
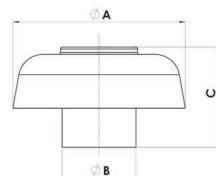
Fabricated from heavy gauge galvanised steel. Ember penetration is prevented with stainless steel mesh with a maximum aperture of 2mm. Available in optional Colorbond™ colours.

Testing

Aerodynamic performance has been determined by testing to ISO5801:2007.

Data

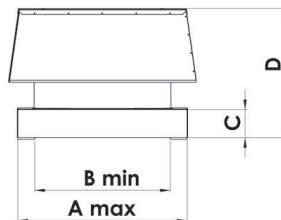
Refer to the latest product datasheet for individual model specification. Datasheets are available from our electronic selection software **FansSelect** downloadable at www.pacificHVAC.com



	A	B(I/D)	C
BVCQ-0 & BVCR150	300	150	220

	A	B	C
BVCQ-0 Curb Base	170	240	55

Note: Add dimension 'C' Curb Base to fan Dimension 'C' for overall assembly height.



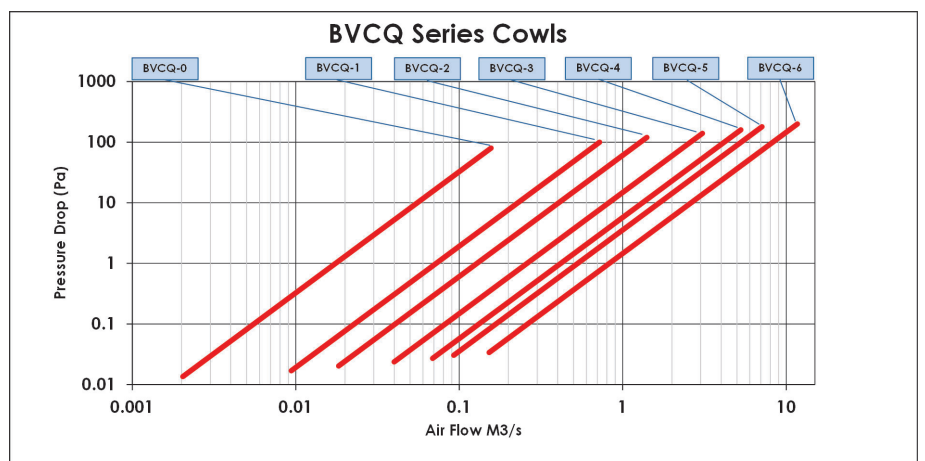
Design Considerations

Owing to the potential for debris build up against ember protection mesh between routine inspections and servicing, designers are advised to make adequate allowance for accumulating pressure losses in their selections.

Suggested Specification

Bushfire Code Compliant (to maximum BAL-40) Air Relief Cowls shall be of the BVCQ Series manufactured by Pacific HVAC Engineering. Cowls shall be constructed from galvanised steel. Ember penetration shall be prevented by the installation of stainless steel mesh with a maximum aperture of 2mm. The fans shall meet the design requirements of AS3959-2009 up to BAL-40.

Model	A	B	C	D	Kg
BVCQ-1	380	330	25	195	6
BVCQ-2	530	440	50	250	16
BVCQ-3	715	615	80	340	30
BVCQ-4	840	740	80	390	50
BVCQ-5	960	810	80	420	60
BVCQ-6	1160	1010	80	580	75



BVCV Series cowls (400-1000Ø)



BVCV roof cowls are designed to provide vertical discharge exhaust for mechanical ventilation systems. Butterfly type dampers prevent rain water entry when the system is not operating. BVCV models provide a range of sizes and capacities to suit almost any specification. The cowls meet the requirements of **AS 3959-2009** up to BAL-40.

Construction

The range is manufactured from galvanised steel and aluminium. Metal butterfly weather shields are air operated. Ember penetration is prevented with stainless steel mesh with a maximum aperture of 2mm. Available in optional Colorbond™ colours.

Application Notes

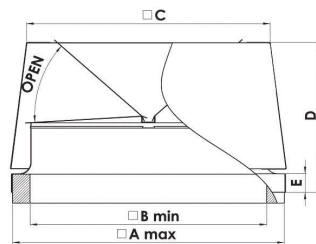
Vertical discharge cowls should only be used where exhaust air velocities are sufficient to prevent rain ingress during operation. For low air velocity applications refer to BVCQ horizontal discharge cowls. In high wind speed locations, the use of magnetic catches is highly recommended.

Data

Refer to the latest product datasheet for individual model specification. Datasheets are available from our electronic selection software **FansSelect** downloadable at www.pacificHVAC.com

Design Considerations

Owing to the potential for debris build up against ember protection mesh between routine inspections and servicing, designers are advised to make adequate allowance for accumulating pressure losses in their selections.



Suggested Specification

Bushfire Code Compliant (to maximum BAL-40) Air Relief Cowls shall be of the BVCV Series manufactured by Pacific HVAC Engineering. Cowls shall be constructed from galvanised steel. Ember penetration shall be prevented by the installation of stainless steel mesh with a maximum aperture of 2mm. The fans shall meet the design requirements of AS3959-2009 up to BAL-40.

BVCV	A	B	C	D	E	Kg
400	530	440	472	313	50	20
500	645	545	557	443	80	26
560	715	615	628	443	80	30
630	795	695	690	513	80	35
710	840	740	777	516	80	40
800	960	810	816	635	80	55
1000	1160	1010	1034	637	80	70

Ancillaries

