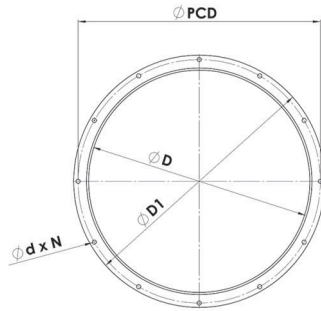


Duct connection flanges



FLA-AX Flanges for all AX Series Fans

Manufactured from heavy gauge galvanised steel, supplied in pairs. Note that hole diameters are nominal, holes for most sizes are slot type for easier installation. **Flange duct connection width varies between 30 and 70mm**

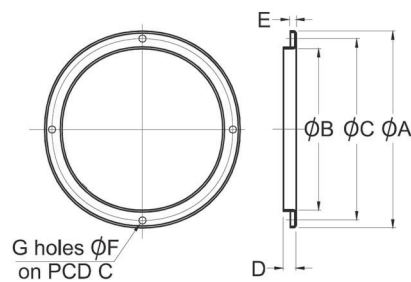


| Size | D | PCD | D1 | N | d |
|------|-----|-----|------|----|----|
| 315 | 315 | 355 | 395 | 8 | 12 |
| 400 | 400 | 450 | 490 | 8 | 12 |
| 450 | 450 | 500 | 540 | 8 | 12 |
| 500 | 500 | 560 | 610 | 12 | 12 |
| 560 | 560 | 620 | 670 | 12 | 12 |
| 630 | 630 | 690 | 740 | 12 | 12 |
| 710 | 710 | 770 | 820 | 16 | 12 |
| 800 | 800 | 860 | 910 | 16 | 12 |
| 900 | 900 | 970 | 1030 | 16 | 15 |

| Size | D | PCD | D1 | N | d |
|------|------|------|------|----|----|
| 1000 | 1000 | 1070 | 1130 | 16 | 15 |
| 1100 | 1120 | 1190 | 1240 | 20 | 15 |
| 1200 | 1250 | 1320 | 1380 | 20 | 15 |
| 1400 | 1400 | 1470 | 1540 | 20 | 15 |
| 1500 | 1500 | 1570 | 1640 | 20 | 15 |
| 1600 | 1600 | 1680 | 1750 | 24 | 19 |
| 1800 | 1800 | 1880 | 1950 | 24 | 19 |
| 2000 | 2000 | 2080 | 2150 | 24 | 19 |

FLA-FEF Flanges for all FEF Series Fans

Manufactured from spun galvanised steel, supplied in pairs. Note that hole diameters are nominal, holes for most sizes are slot type for easier installation

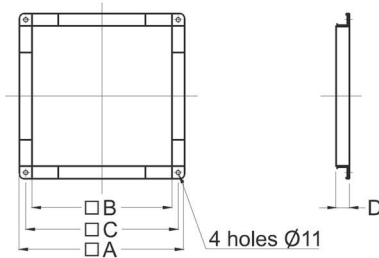


| Fan Size | A | B | C | D | E | F | G | Kg |
|----------|-----|-----|-----|----|---|------|----|------|
| 200 | 255 | 202 | 231 | 20 | 9 | 7 | 4 | 0.2 |
| 250 | 306 | 256 | 282 | 20 | 9 | 7 | 4 | 0.25 |
| 300 | 360 | 310 | 336 | 20 | 9 | 7 | 4 | 0.3 |
| 350 | 420 | 356 | 395 | 30 | 9 | 9.5 | 8 | 0.35 |
| 400 | 465 | 400 | 438 | 30 | 9 | 9.5 | 12 | 0.4 |
| 450 | 515 | 451 | 488 | 30 | 9 | 9.5 | 12 | 0.5 |
| 500 | 565 | 503 | 541 | 30 | 9 | 9.5 | 12 | 0.7 |
| 560 | 630 | 560 | 605 | 30 | 9 | 11.5 | 16 | 0.75 |
| 630 | 710 | 634 | 674 | 30 | 9 | 11.5 | 16 | 0.8 |

Duct connection flanges

FLA-SCDQ-SMD Flanges for all ICQ Series Fans

Light weight square flange manufactured from galvanised sheet steel with corner fixing points, supplied in pairs.

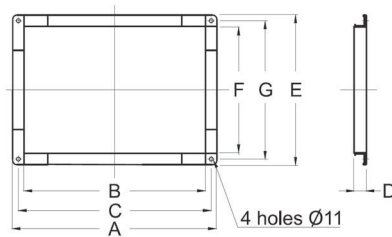


| Fan Size | A | B | C | D | kg |
|----------|-----|-----|-----|----|------|
| 315 | 480 | 410 | 445 | 35 | 1.75 |
| 355 | 520 | 450 | 485 | 35 | 2 |
| 400 | 570 | 500 | 535 | 35 | 2.1 |
| 450 | 620 | 550 | 585 | 35 | 2.3 |

| Fan Size | A | B | C | D | kg |
|----------|-----|-----|-----|----|------|
| 500 | 720 | 650 | 685 | 35 | 2.75 |
| 560 | 770 | 700 | 735 | 35 | 3 |
| 630 | 870 | 800 | 835 | 35 | 3.5 |

FLA-TCD Flanges for rectangular duct fans

Light weight square flange manufactured from galvanised sheet steel with corner fixing points, supplied in pairs.



| TCD | | | | | | | | | |
|----------|-----|-----|-----|----|-----|-----|-----|------|--|
| Fan Size | A | B | C | D | E | F | G | Kg | |
| 315 | 570 | 500 | 535 | 35 | 555 | 485 | 520 | 2.1 | |
| 355 | 670 | 600 | 635 | 35 | 662 | 592 | 627 | 2.1 | |
| 400 | 720 | 650 | 685 | 35 | 760 | 690 | 725 | 2.45 | |
| 450 | 770 | 700 | 735 | 35 | 820 | 750 | 785 | 2.75 | |
| 500 | 870 | 800 | 835 | 35 | 910 | 840 | 875 | 3.3 | |
| 560 | 970 | 900 | 935 | 35 | 970 | 900 | 935 | 3.5 | |