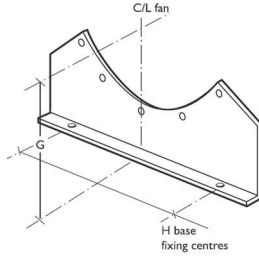


## Foot Brackets / Mounting brackets



Fan Size	H
315	220
350**	290
400*	290
450*	330
500*	380
560*	420
630*	500
710	540
800	720

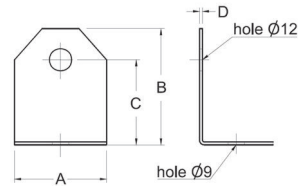
Fan Size	H
900	810
1000	910
1100	960
1200	1090
1400	1240
1500	1340
1600	1440
1800	1640
2000	1840

\*\*FEF350 only.

\* Suits AX and FEF models.

### Foot-FEF-Small, Mounting Brackets for all FEF200, 250,300 Fans

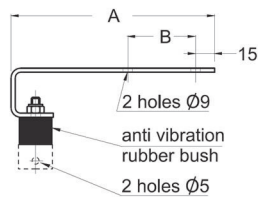
Manufactured from galvanised sheet, supplied in pairs.



For Fan Size	A	B	C	D	KG
200, 250, 300	50	64	47	1.6	0.1

### CB150 Mounting Bracket for all K and KS Models

Designed to mount small diameter fans under floors or in ceiling spaces. Manufactured from corrosion protected steel with rubber bush for vibration isolation. Includes TCB200-350 bracket as part of the assembly. Refer to TCB200-350 specifications for details.

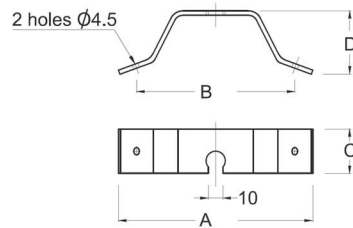


Part	A	B	C	D	KG
CB150	150	50	25	57	0.3

## Foot brackets / Mounting brackets

### TCB200-350 Mounting Brackets for and KS Series Fans

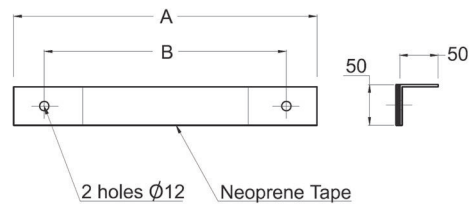
Designed to mount small diameter fans under floors or in ceiling spaces. Manufactured from galvanised sheet steel.



Part	A	B	C	D	KG
<b>TCB200-350</b>	130	107	30	40	0.15

### ICF Mounting Brackets for all ICQ and TCD Models

Used to mount square or rectangular inline fans in ceiling spaces or under floors. Manufactured from galvanised sheet, supplied in pairs.

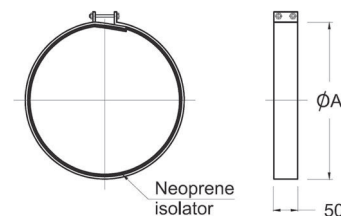


For Fan Size	A	B	KG
<b>310</b>	650	600	1.65
<b>355</b>	750	700	1.9
<b>400</b>	800	750	2.1
<b>450</b>	850	800	2.2

For Fan Size	A	B	KG
<b>500</b>	950	900	2.4
<b>560</b>	1050	1000	2.65
<b>630</b>	1150	1100	2.9
<b>710</b>	1250	1200	3.1

### FK Clamp / Mounting Bracket for all circular models 125mm-315mm

Used to mount circular fans or connect to rigid / flexible ducting systems. Manufactured from galvanised sheet steel with neoprene collar, supplied pairs.



For Fan Size	A	KG
<b>125</b>	125	0.3
<b>150</b>	150	0.35
<b>200</b>	200	0.4
<b>250</b>	250	0.5
<b>315</b>	315	0.7