

RPA Series - ring plate axial



RPA

The RPA series is a range of ceiling or wall mount fans featuring external rotor motors and sickle blade impellers for very quiet operation. Ideally suited to commercial and industrial ventilation applications where an attractively styled ring plate type fan is required. The fans have a cylindrical body design for direct connection to ductwork. Fans can be mounted at any angle.

Construction

Cases and grille are of powder coated steel. Motor supports are of corrosion protected steel.

Motors

Motor windings incorporate type 'F' insulation as standard. Motor bearings are maintenance free sealed for life design. Auto-reset thermal contacts are provided.

Testing

Rated fan performance has been determined by testing to ISO 5801 : 2007. Fan sound data has been determined by testing to ISO 13347 : 2004.

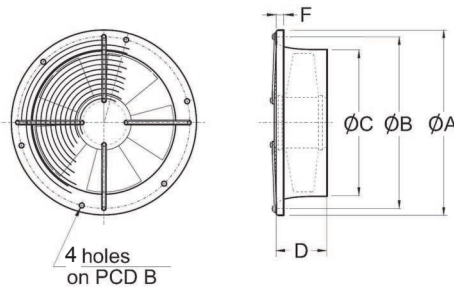
Wiring diagrams and latest data

Refer to the latest product datasheet for individual model wiring instructions, data and specifications. Datasheets are available from our electronic selection software **FansSelect** downloadable at www.pacificHVAC.com

It is a condition of our warranty that all equipment supplied is installed according to the requirements of AS/NZS3000:2007 Australian/New Zealand wiring rules.

Suggested Specification

Ring Plate Axial Flow type fans shall be of the RPA series manufactured by Pacific HVAC Engineering. Sickle blade axial impellers shall be driven by external rotor motors with sealed for life bearings. Cases and grilles to be corrosion protected powder coat steel. All fans shall be fully tested in accordance with the requirements of ISO 5801 : 2007 for air flow and ISO 13347 : 2004 for sound.



| RPA | | | | | | | |
|------|-----|-----|-----|-----|----|---|----|
| Size | A | B | C | D | F | G | kg |
| 200 | 255 | 231 | 202 | 145 | 10 | 4 | 3 |
| 250 | 306 | 282 | 256 | 145 | 10 | 4 | 4 |
| 300 | 370 | 336 | 310 | 170 | 10 | 4 | 5 |
| 350 | 420 | 395 | 356 | 170 | 10 | 8 | 6 |

Ancillaries



RPA Series - ring plate axial

| Fan Model | RPM | Voltage | Amps | kW | SPL dB referred to 10 ⁻¹² W Type D: ducted outlet (LW) | | | | | | | | |
|-----------|------|---------|------|-------|---|-----|-----|-----|----|----|----|----|------------|
| | | | | | 63 | 125 | 250 | 500 | 1K | 2K | 4K | 8K | dB(A) @ 3m |
| RPA200-2E | 2670 | 240 | 0.3 | 0.06 | 67 | 69 | 67 | 65 | 62 | 62 | 54 | 52 | 47 |
| RPA200-4E | 1370 | 240 | 0.21 | 0.03 | 58 | 69 | 53 | 51 | 45 | 45 | 37 | 35 | 35 |
| RPA250-2E | 2450 | 240 | 0.51 | 0.115 | 60 | 69 | 66 | 67 | 64 | 63 | 58 | 54 | 49 |
| RPA250-4E | 1390 | 240 | 0.53 | 0.069 | 57 | 60 | 57 | 55 | 54 | 51 | 47 | 38 | 38 |
| RPA300-2E | 2650 | 240 | 0.62 | 0.14 | 67 | 72 | 74 | 72 | 70 | 66 | 63 | 61 | 54 |
| RPA300-4E | 1320 | 240 | 0.32 | 0.072 | 58 | 60 | 63 | 60 | 58 | 54 | 54 | 49 | 42 |
| RPA300-6E | 960 | 240 | 0.32 | 0.038 | 51 | 53 | 55 | 52 | 51 | 48 | 43 | 42 | 35 |
| RPA350-4E | 1340 | 240 | 0.73 | 0.165 | 63 | 65 | 62 | 63 | 60 | 56 | 50 | 45 | 44 |
| RPA350-6E | 960 | 240 | 0.73 | 0.087 | 53 | 59 | 57 | 56 | 54 | 50 | 47 | 44 | 38 |

