

SBD mounting plate



Installation Manual – Mounting Bracket

Kit Contents:



2 x Metal plates

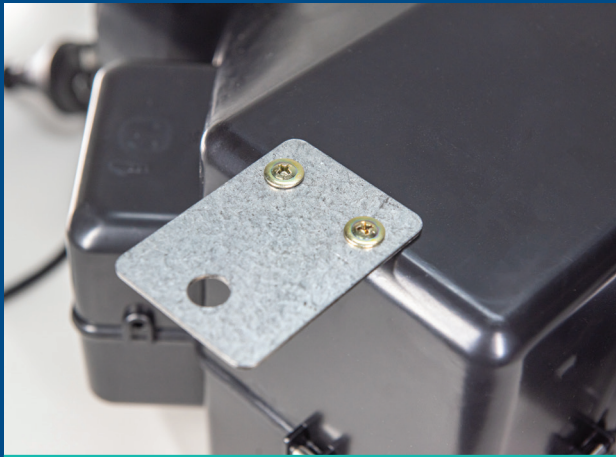


4 x Self-tapping screws



2 x Rubber grommets

Assembly Instructions:



1. Fix a grommet into the large hole of the metal plate;
2. Screw the two metal plates onto the un-labelled side of the fan with the self-tapping screws provided.
Do not fix mounting plates to the labelled side of the fan.
Note: Fixing locations are moulded into fan case;
3. Fan can now be mounted into the desired position by screwing through the rubber grommets, note these fixing screws are not supplied. The rubber grommets are used to minimise vibration.



We are the safe choice.

