

Inline Mixed Flow EC Fan Range

PMF and SMF series





PMF Series – EC inline mixed flow

Inline duct type fans using a mixed flow impeller design with highly efficient EC motors as standard and exceptionally low noise levels. Motor cases unclip from duct connections for easy servicing. The ideal solution for medium demand ventilation in commercial and residential systems. Suitable for room to room air transfer and supply or exhaust ventilations.

Construction

The range is fitted with mixed flow impellers driven by long life motors with sealed-for-life bearings. Cases are made from injection moulded polymer.

Features

The fan is supplied with an on-board speed control potentiometer for internal speed control. The fan is also suitable for external 0-10VDC analogue signal for speed control. Can be installed in parallel or series configuration for higher pressures or flows. Easy motor/impeller dismount system.

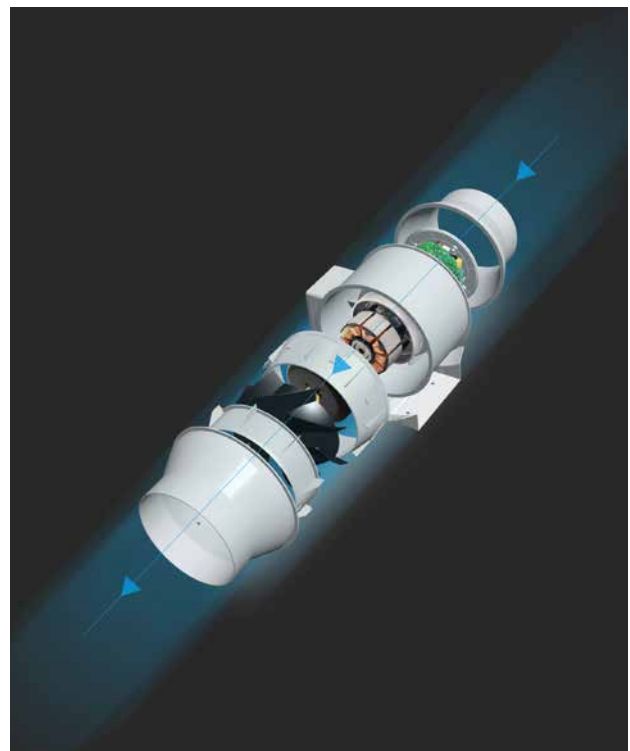
Testing

Rated fan performance has been tested in accordance with the following.

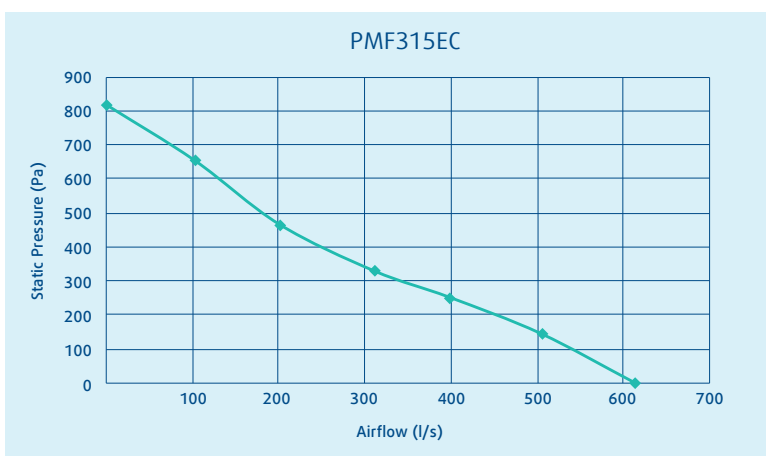
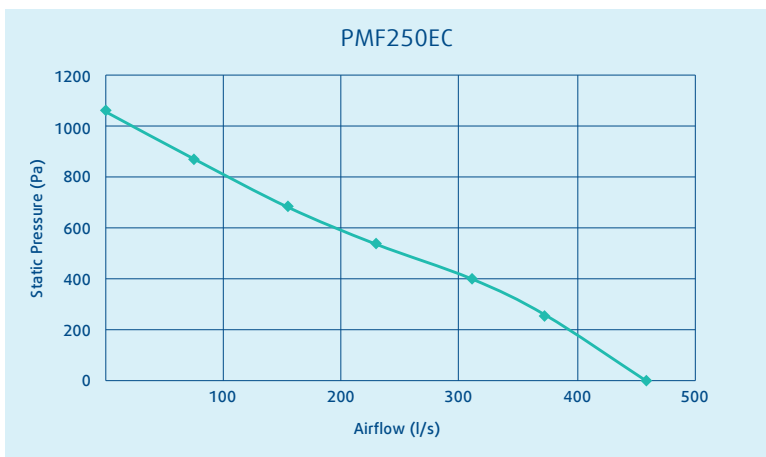
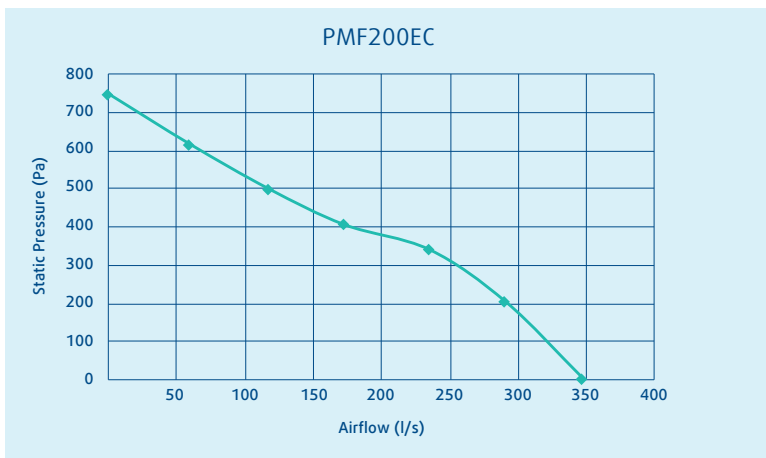
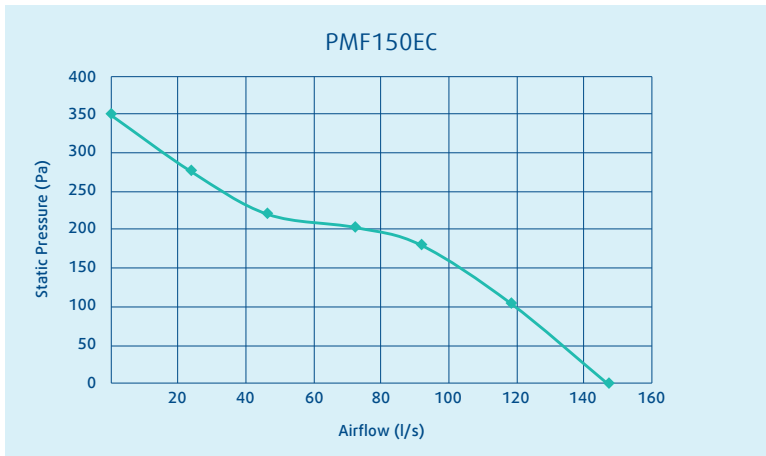
- Performance test to ISO 5801: 2007.
- Fans sound data has been determined by ISO 13347: 2004.
- Electrical compliances test to IEC60335.1 and IEC60335.2.80.

Wiring

Fans are fitted with flex leads and plugs.



Fan Curves



Technical Data

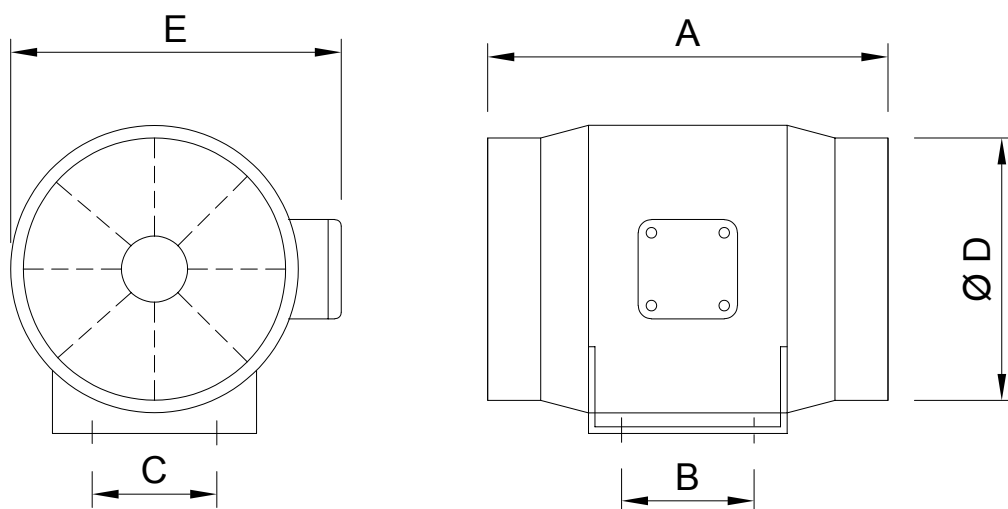
Product Code	Speed (rev/min)	230V/50Hz/1Φ		
		Motor Input (W)	Full Load Current (A)	Max Temp (°C)
PMF150EC	2550	50	0.35	60
PMF200EC	3000	165	1.05	60
PMF250EC	3000	255	1.5	60
PMF315EC	2350	250	1.4	60

Sound Data

Product Code	Sound Pressure Level (dBA@3m)	Inlet Sound Power Level (dB re 10 ⁻¹² Watts)							
		63	125	250	500	1k	2k	4k	8k
PMF150EC	42	56	54	60	59	59	57	49	42
PMF200EC	48	58	60	64	64	65	64	58	53
PMF250EC	51	61	64	67	66	68	66	64	53
PMF315EC	49	62	65	68	67	67	62	56	48

Dimensions

Product Code	Dimensions					
	A	B	C	D	E	kg
PMF150EC	313	80	60	147	227	3
PMF200EC	302	100	94	198	250	5
PMF250EC	383	150	150	258	310	8
PMF315EC	446	181	178	312	386	11





SMF Series – EC inline mixed flow

Ultra-low noise inline duct type fans using a mixed flow impeller design with highly efficient EC motors as standard and lined with sound absorption material. Motor cases unclip from duct connections for easy servicing. The ideal solution for medium demand ventilation in commercial and residential systems. Suitable for room to room air transfer and supply or exhaust ventilation.

Construction

The range is fitted with mixed flow impellers driven by long life motors with sealed-for-life bearings. Cases are made from injection moulded polymer with insulation and perforated lining.

Features

The fan is supplied with an on-board speed control potentiometer for internal speed control. The fan also suitable for external 0-10VDC analogue signal for speed control. Can be installed in parallel or series configuration for higher pressures or flows. Easy motor/impeller dismount system.



Testing

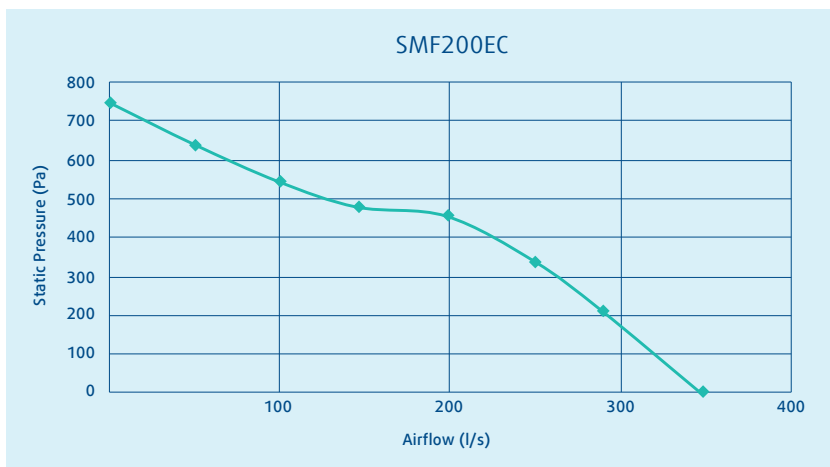
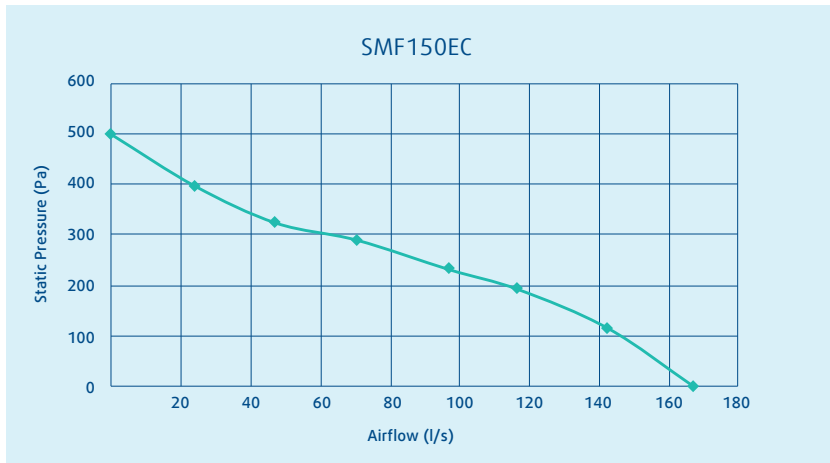
Rated fan performance has been tested in accordance with the following.

- Performance test to ISO 5801: 2007 .
- Fans sound data has been determined by ISO 13347: 2004.
- Electrical compliances test to IEC60335.1 and IEC60335.2.80.

Wiring

Fans are fitted with flex leads and plugs.

Fan Curves



Technical Data

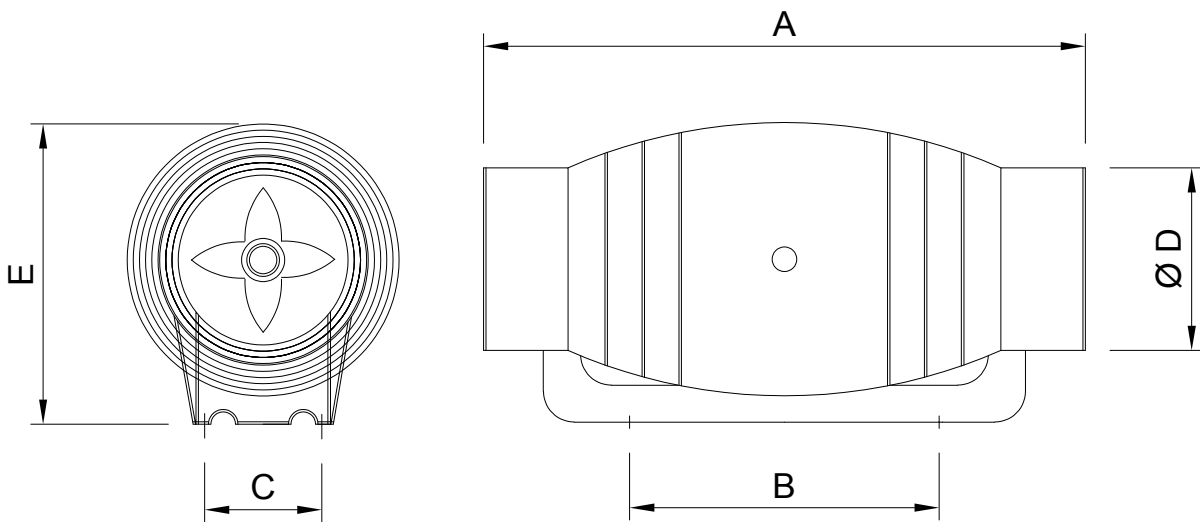
Product Code	Speed (rev/min)	230V/50Hz/1Φ		
		Motor Input (W)	Full Load Current (A)	Max Temp (°C)
SMF150EC	3000	70	0.47	60
SMF200EC	3000	165	1.05	60

Sound Data

Product Code	Sound Pressure Level (dBA@3m)	Inlet Sound Power Level (dB re 10 ⁻¹² Watts)							
		63	125	250	500	1k	2k	4k	8k
SMF150EC	44	50	52	60	63	62	57	52	46
SMF200EC	48	56	58	61	65	65	63	60	55

Dimensions

Product Code	Dimensions					kg
	A	B	C	D	E	
SMF150EC	488	251	95	148	244	4
SMF200EC	567	339	128	198	301	5





Systemair NZ Ltd
Ph 0800 100 326
www.systemair.nz